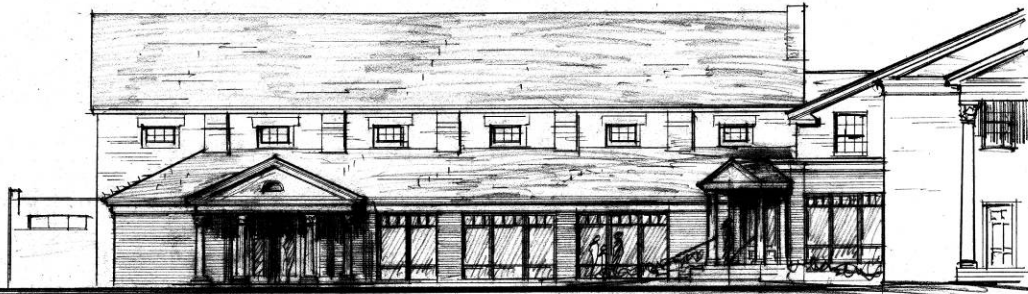


The Church Leadership Council, on the recommendation of the Facilities Assessment and Planning Committee, proposes that Kirkwood Baptist Church hire Hewitt and Assoc. to conduct a capital campaign and that 90% of the money pledged be used to implement the renovation plans as proposed by LePique & Orne and 10% be dedicated to mission efforts.

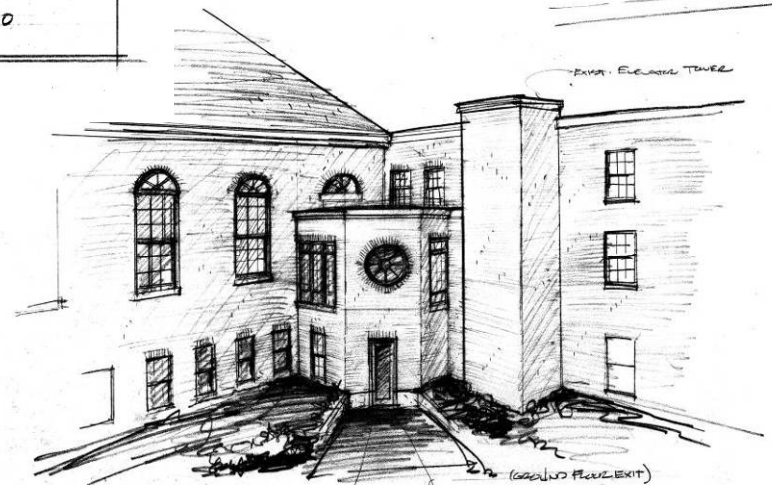


New Doors w/
Pine Ligns

PARTIAL ELEVATION
1/8" = 1'-0"

KIRKWOOD BAPTIST CHURCH
KIRKWOOD, MISSOURI

LEFFLER + CRONE ARCHITECTS 9 MAR 2010



NEW SQUARE TOWER

2nd (GROUND FLOOR) EXIT

STUDY FOR FUTURE EXPANSION & ADDITION

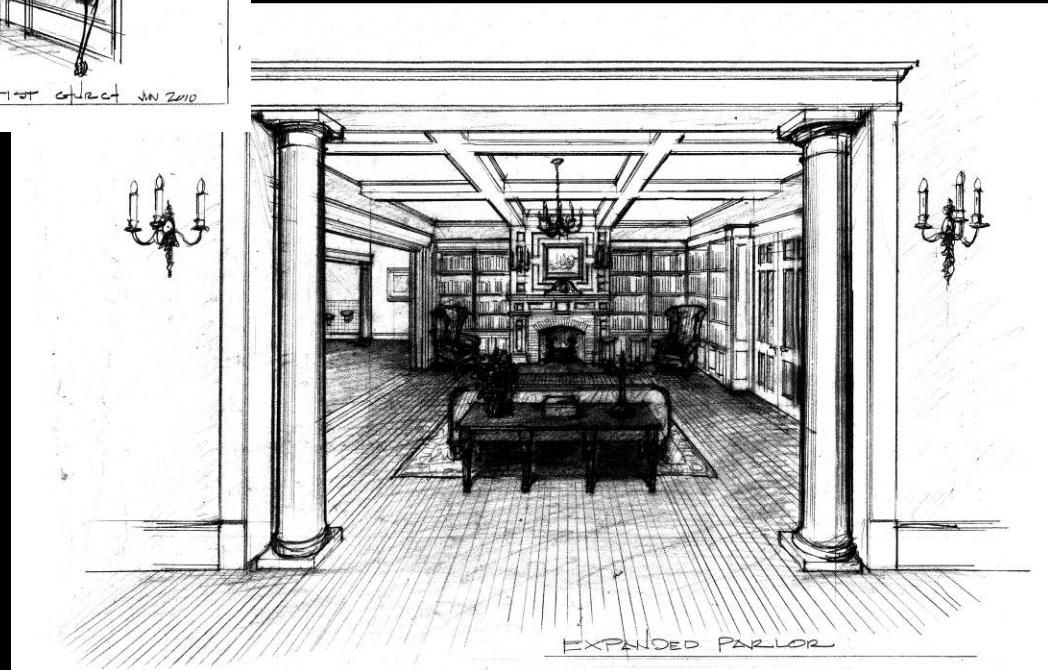
Kirkwood Baptist Church

LEFFLER + CRONE ARCHITECTS
D. CRONE 2010

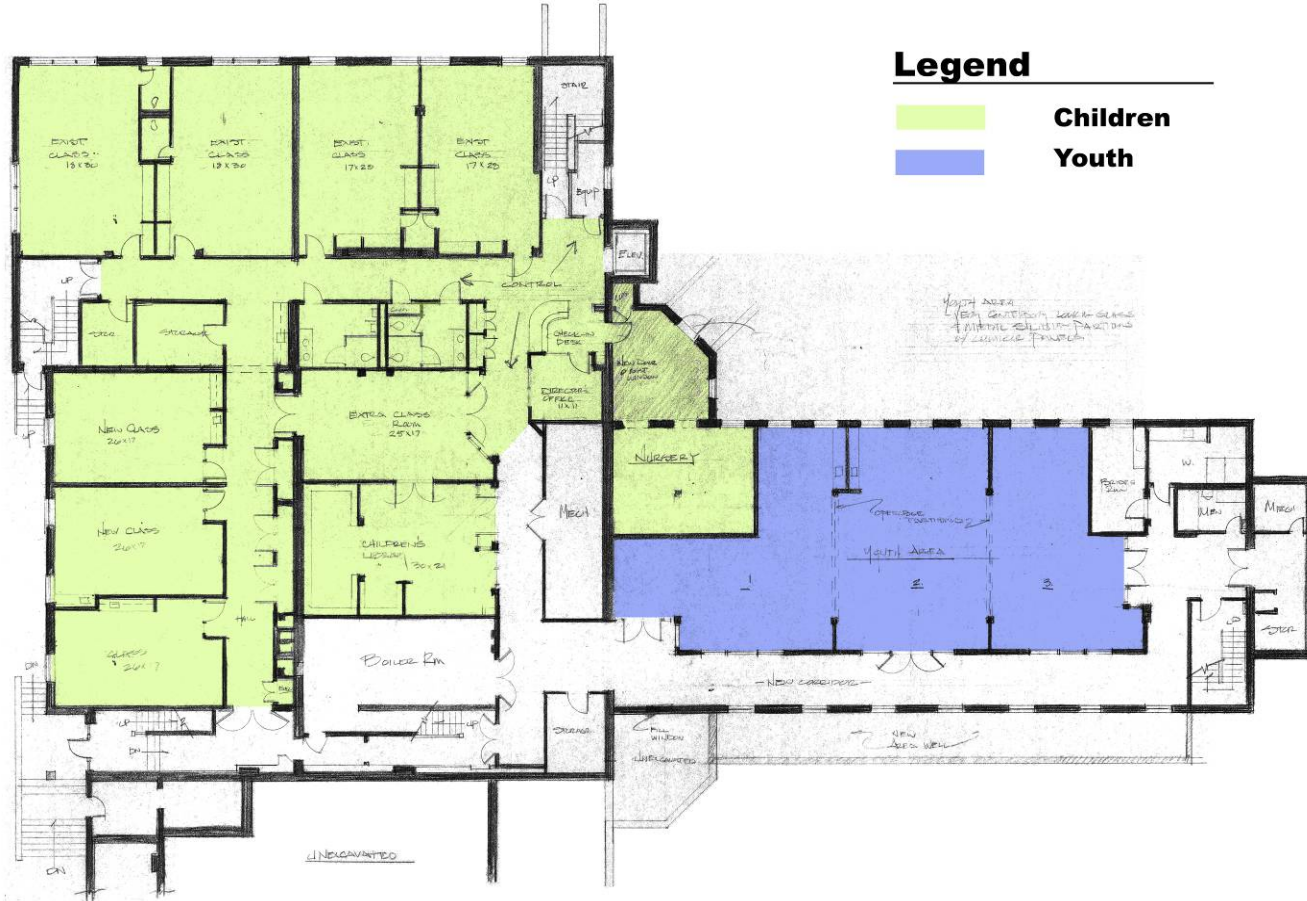


Le Ponce/Deane

RENOVATED GATHERING SPACE KIRKWOOD BAPTIST CHURCH JAN 2010

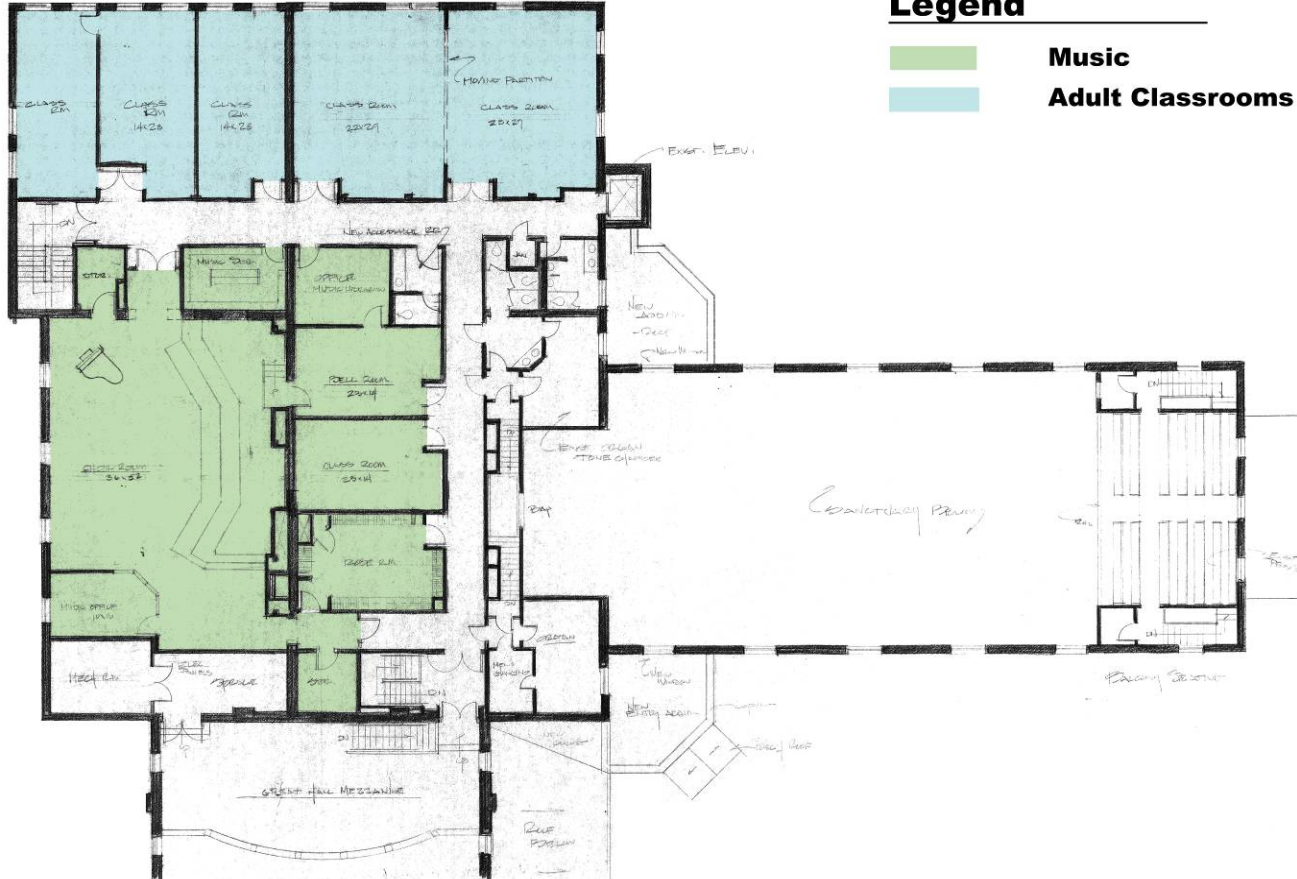


EXPANDED PARLOR



Legend

- Children
- Youth



Legend

- Music
- Adult Classrooms